

Quick guide for importing Elos Accurate[®] Library

3shape

Elos Accurate[®] Library

December 2017

Content:

- | | |
|--|---|
| ▪ Download the latest Elos Accurate [®] Library | 2 |
| ▪ Requirements | 3 |
| ▪ Before installing new libraries | 4 |
| ▪ Importing the Elos Accurate [®] Library into 3shape Dental System | 6 |

Elos Accurate[®] Library

Download the latest Elos Accurate[®] Library

To download the latest Elos Accurate[®] Library, visit the Elos Accurate web site at the following link <http://elosdental.com/support-training/downloads/>

The Elos Accurate[®] Library is also available for download on the 3Shape Download Center.

By signing up for the Elos Accurate newsletter you will always be informed about new Elos Accurate[®] Library releases. Sign up at <http://elosdental.com/>.

The Elos Accurate[®] Library offers a complete digital open workflow solution for Desktop or Intra Oral scanning.

The Elos Accurate libraries are divided into groups making it easy to download the relevant library or all.

Elos Accurate[®] Hybrid Base[™] Bridge: Contains prefabricated components with a titanium interface towards the implant with engaging interface and is used for screw-retained bar or bridge constructions.

Elos Accurate[®] Hybrid Base[™] Kit: Contains prefabricated components with a titanium interface towards the implant with engaging interface and is used for screwed single or small cemented bridge restorations.

Single Abutment: Is used for milled single abutments using the Elos Pre-milled Abutments.

Bar & Bridge: Is used for creating a bar or bridge in one piece and includes the interface geometries.



Elos Accurate[®] Library

Requirements

The Elos Accurate[®] Library utilizes the multiple scanbody option within 3shape to simplify the use of our products.

These are the preconditions for usage of our libraries:

- Dental System 2016 or newer
- Abutment Designer Module - License or buy CAD points
- Implant Bars/Bridge Design Module - License or buy CAD points
- Model Builder STL - License or buy CAD points
- ScanItDental not *ScanItRestoration*

The chart below from 3shape specifies which scanners that are compatible whit the ScanItDental software.

Scanner support by scanning software	ScanItRestoration	ScanItDental	Occlusion setup tool support (based on ScanSuite)
D1000, D2000, E1, E2, E3	X	✓	✓
D500, D700*, D710*, D750, D800, D810, D850, D900, D900L	✓	✓	✓
D250, D640, D700**, D710**	✓	X	X

* higher than serial number: d/c0915xxxx

** lower than serial number: d/c0915xxxx

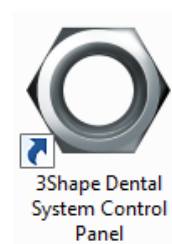
Elos Accurate[®] Library

Before installing new libraries

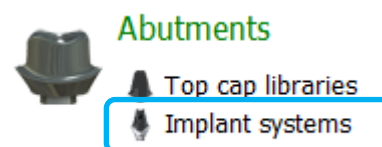
If you already have an old version of Elos Accurate[®] Library installed on your computer you need to follow the instruction below. If this is the first time an Elos Accurate[®] Library is being installed, you can skip to the next chapter of this instruction.

Before updating the Elos Accurate[®] Library it is necessary to remove the old libraries.

- Open the **Dental System Control Panel** by clicking on the icon



- In the Dental System Control Panel click on the **Implant Systems** option in the Abutment category



Elos Accurate[®] Library

This will open the overview of all installed libraries in the 3shape installation.

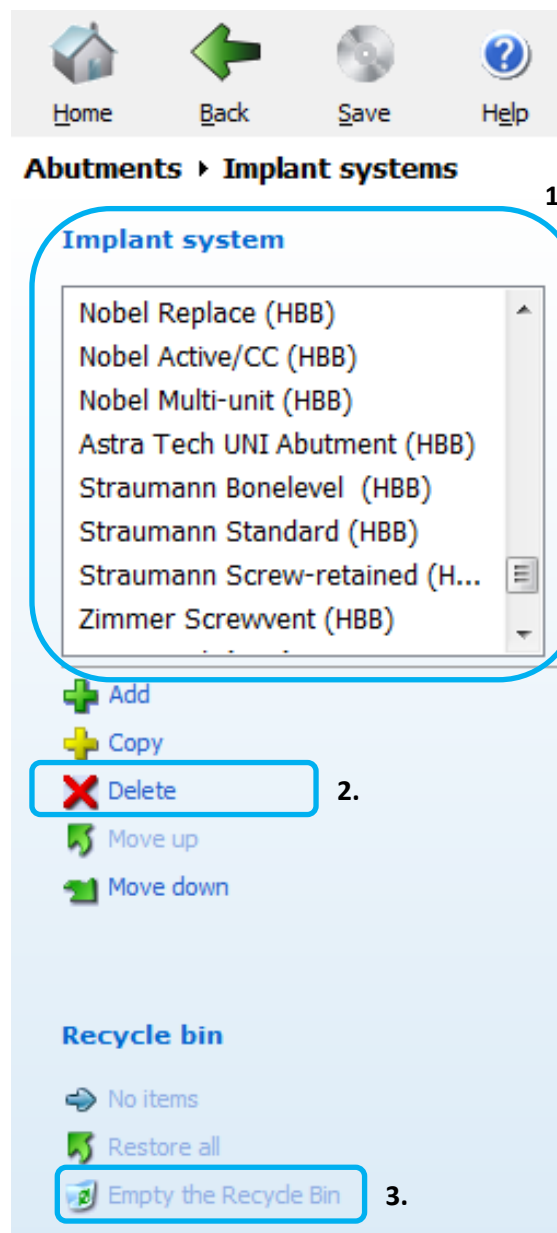
- Select the old Elos Accurate libraries by selecting them in the **Implant system** box (Figure 1.) The Elos Accurate libraries are recognizable by the abbreviation in brackets after the implant system name, in this case (HBB).

Abbreviation used in Elos Accurate libraries.

Elos Accurate [®] Hybrid Base™ Bridge	HBB
Elos Accurate [®] Hybrid Base™ Kit	HB
Single Abutment	SA
Bar & Bridge	BB

- When all the necessary old Elos Accurate libraries are selected press the **Delete** button. (Figure 2.)

- **Empty the Recycle Bin** afterwards. (Figure 3.)



Note:

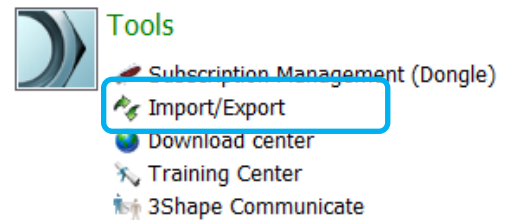
Do not remove folders in the "Imported System" folder in the 3shape installation.

Elos Accurate[®] Library

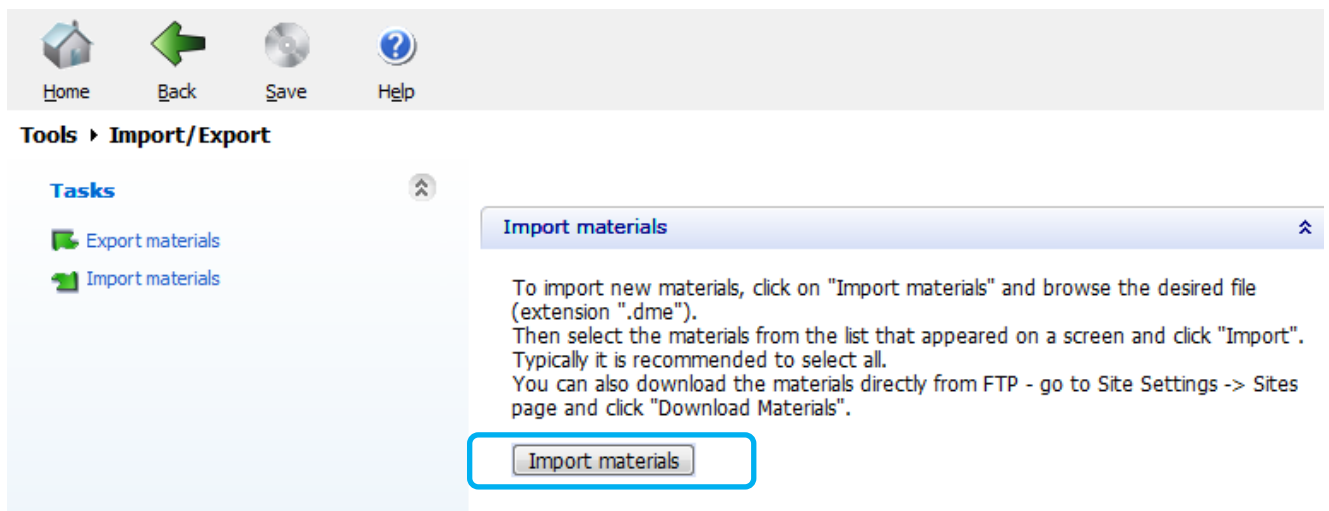
Importing the Elos Accurate[®] Library into 3shape Dental System

After removing previous version of the Elos Accurate[®] Library, the import of the new version can be initiated.

- In the Dental System Control Panel click on the **Import/Export** option in the Tools category

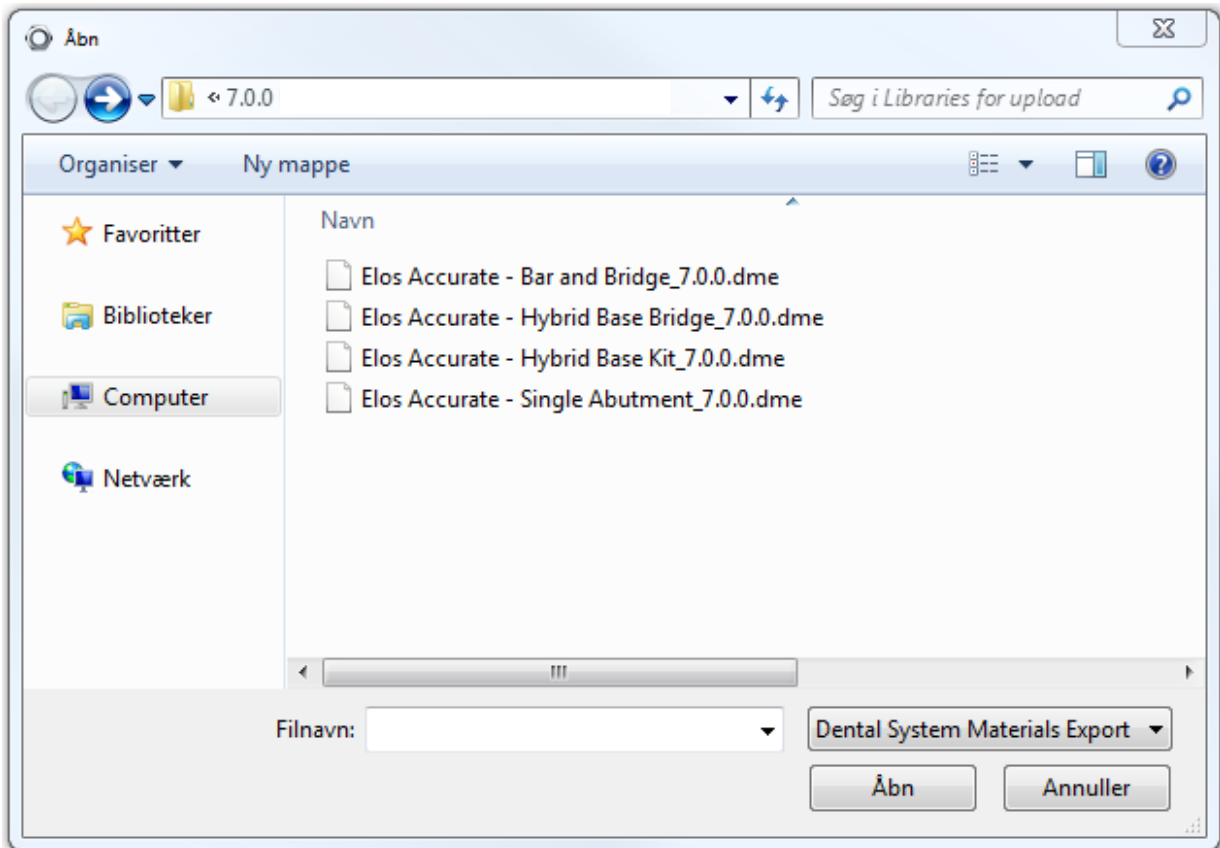


- This will open the Import/Export dialog, click on the **Import materials** button



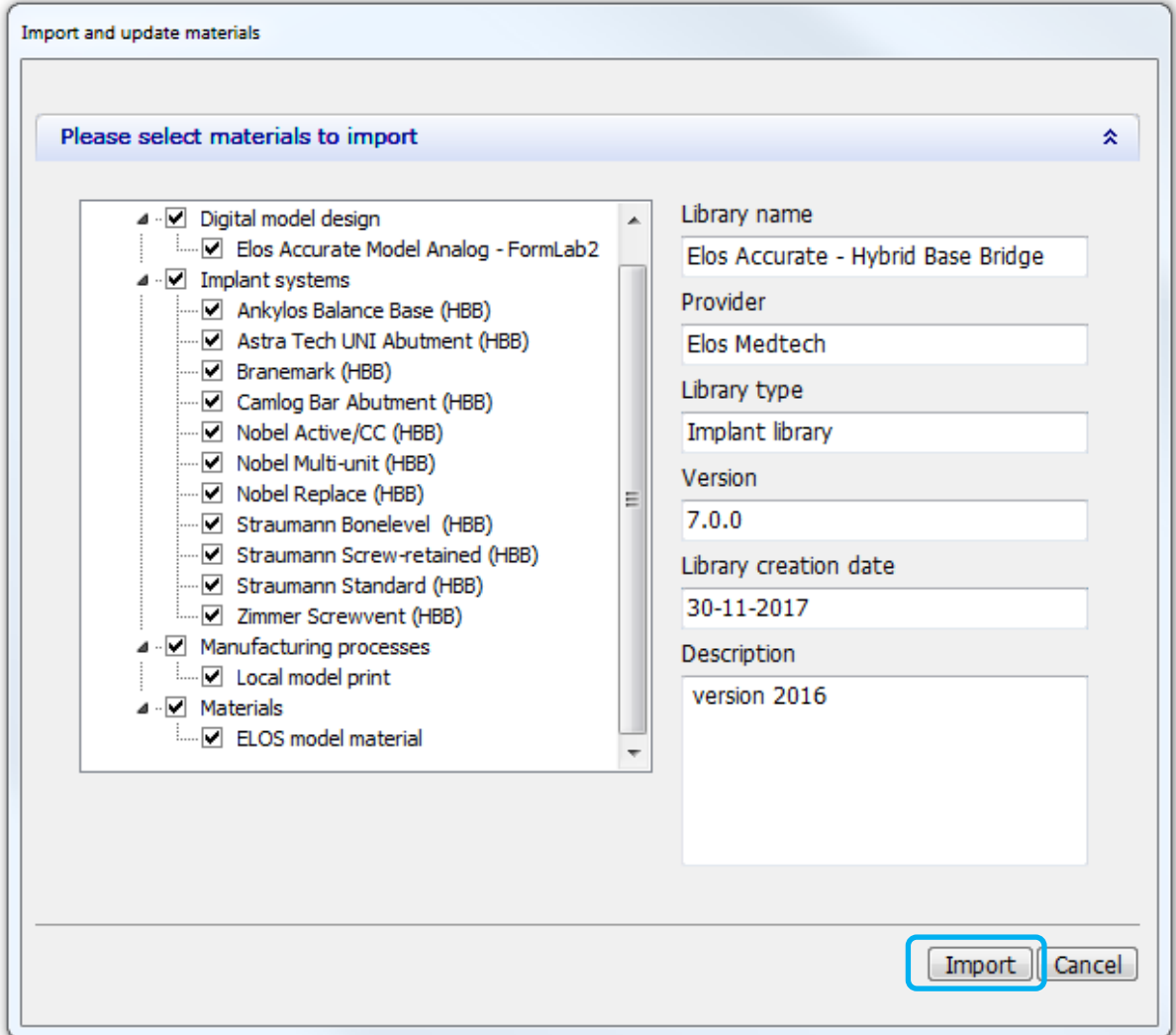
Elos Accurate[®] Library

Choose the .DME file to import in the pop-up window that appears.



Elos Accurate[®] Library

It is possible to choose which Implants systems to import, by default all are selected. Press **Import** when ready.



Import and update materials

Please select materials to import

- Digital model design
 - Elos Accurate Model Analog - FormLab2
- Implant systems
 - Ankylos Balance Base (HBB)
 - Astra Tech UNI Abutment (HBB)
 - Branemark (HBB)
 - Camlog Bar Abutment (HBB)
 - Nobel Active/CC (HBB)
 - Nobel Multi-unit (HBB)
 - Nobel Replace (HBB)
 - Straumann Bonelevel (HBB)
 - Straumann Screw-retained (HBB)
 - Straumann Standard (HBB)
 - Zimmer Screwvent (HBB)
- Manufacturing processes
 - Local model print
- Materials
 - ELOS model material

Library name
Elos Accurate - Hybrid Base Bridge

Provider
Elos Medtech

Library type
Implant library

Version
7.0.0

Library creation date
30-11-2017

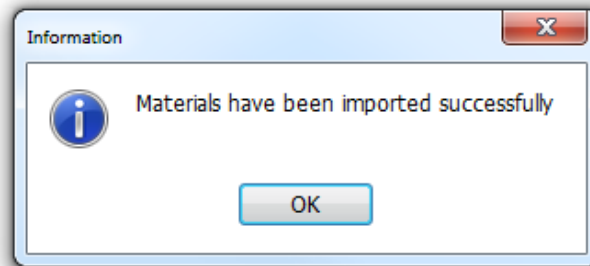
Description
version 2016

Import **Cancel**

Elos Accurate[®] Library

If already installed libraries have the same material file, a popup window may appear. Follow the recommendation from 3shape. The common recommendation is usually to **update**.

When the library has been imported a message will appear.



Now the Elos Accurate[®] Library has been successfully installed and the system is ready to work with the Elos Accurate products. Repeat the steps for all the Elos Accurate[®] Library that you wish to install. Upon closing the 3shape software make sure to confirm save otherwise the libraries will not be kept.

